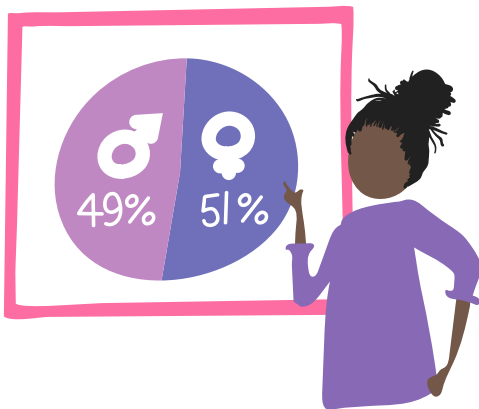


GUYANA'S WOMEN: DATA REFLECTING THE CHALLENGES THEY ARE STILL FACING



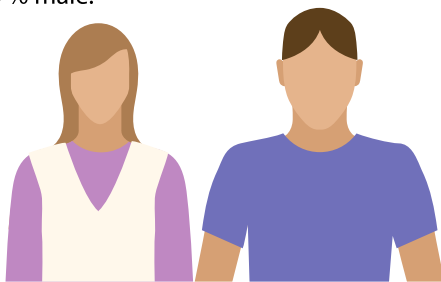
AT A GLOBAL LEVEL, WOMEN'S POWER IN THE ECONOMY IS SIGNIFICANT

Women make up 51% of the population. Before the end of this decade, women will own 75% of the discretionary spending on the planet, which will give them great power in the prosperity of the world's markets.

In 2020 alone women lost more than 60 million jobs (Source: ILO (2021, *World Employment Outlook*), that has translated into a huge setback towards the advancement of women in the workforce, while close to 30 million women fell into poverty during the pandemic. (Source: World Bank (2021), *The World Bank in Gender*.)

IN GUYANA

Demographically, 2012 census data indicates that the Guyanese population stands at 746,955 persons, split approximately as 50.2% female to 49.7% male.



The labour force participation rate is the proportion of the population ages 15-64 that is economically active during a specified period. In the first quarter of 2021, the labour force participation rate in Guyana was recorded at 51.1%, with a significant difference between the rate of men (64.9%) and women (38.7%)

According to 2012 census, the 48.6% of women belonging to the working – age population declared that the main activity in the last 12 months was home duties, compared to 6.1% of men.

(Source: Guyana Labour Force Survey May 2021)

In formal and informal sectors, women's work is mainly concentrated in low paying, non-unionized, unregulated and labour-intensive levels with poor occupational health, safety protections and limited maternal health support.

(Source: International Labour Organization, 2018)

	MEN	WOMEN
Employed population	62.3%	37.7%
Unemployment rate	12.0%	18.4%
Proportion of youth (aged 15-24 years) Not in Education, Employment, Training (NEET) over total youth population	29.5%	42.5%

Source: Guyana Labour Force Survey November 2021

Analyzing the distribution of Employed Labour Force by industrial Sectors, the employment of women is predominantly in the "Tertiary Sector", in particular, women are working in the following three major industrial groups, namely: a) Wholesale and retail trades, etc. b) Education, and c) Public administration and defense and compulsory social security.

The Spotlight Initiative is a strategic and catalytic intervention which seeks to address the root causes and holistically address gender-based violence and family violence, employing innovative approaches and involving state and government institutions, civil society organizations, communities, private sector, and women movements in Guyana. It is a collaboration between the Ministry of Human Services and Social Security, European Union and United Nations.

Among the several highlights, it is important to mention the following:

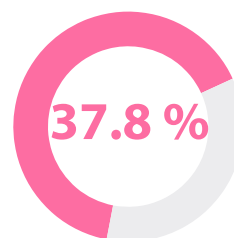
- iMatter App has been launched to provide access to GBV information and agencies support services available; 122 participants from various agencies including Ministries of Human Services and Social Security, Health, Education, Home Affairs/ Guyana Police Force, Legal Affairs, Governance and Parliamentary Affairs, the Judiciary, Office of the Director of Public Prosecutions, Regional Administrations, and Amerindian Village Councils and CSOs were trained in GBV data collection, analysis and use for evidence based decision making.

THROUGHOUT HER LIFE,

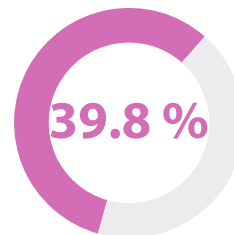
1 in every 2 women in Guyana has or will experience Intimate Partner Violence (IPV).

The first comprehensive national survey on gender-based violence in Guyana revealed that more than half (55%) of all women experienced at least one form of violence.

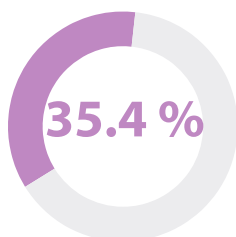
Source: *Guyana women's health and life experiences survey report*
<https://caribbean.unwomen.org/en/materials/publications/2019/11/guyana-womens-health-and-life-experiences-survey-report>



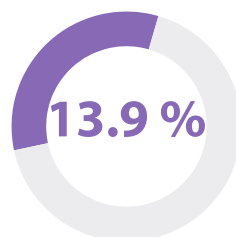
PHYSICAL AND/OR SEXUAL VIOLENCE



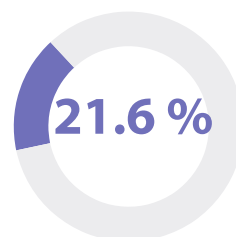
EMOTIONAL VIOLENCE



PHYSICAL VIOLENCE



SEXUAL VIOLENCE



PATRIMONIAL VIOLENCE



IPV adversely affects women and families economically in addition to and through the more direct physical and psychological consequences. Nearly one-third of women who have experienced both physical and sexual violence reported that their income-generating activities have been disrupted by the inability to concentrate. Nearly 1 in 5 victims also reported that her work had been disrupted due to a loss of confidence in her own ability.

Source: *Guyana women's health and life experiences survey report*

OVER 90% OF WOMEN DO NOT REPORT VIOLENCE!